



MARCA



MODELO

BULL 861 QG V20

Categoría producto: MOTOAZADA

Grupo producto: GASOLINA

Cilindrada: 208 c.c.

Versión: 861QGV20

Publicación: 02-20

Cód.: 63G-0063

FIG 1

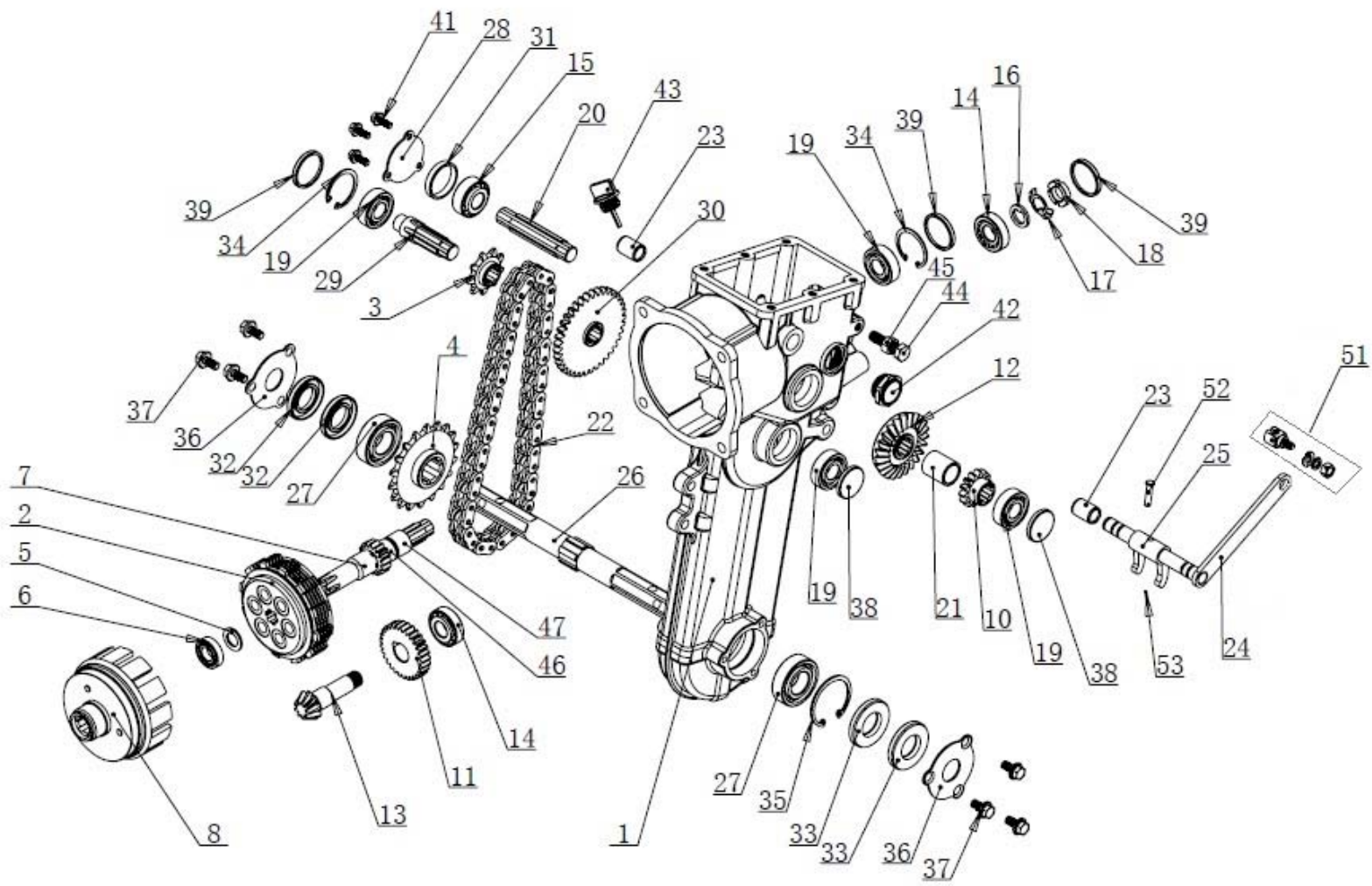


FIG. 1 BULL 861 QG V20

Nº	Nº Ref.	Descripción	English name	Uds.
1	172GBX-1-1	CARCASA TRANSMISION	TRANSMISSION CASING	1
1T	172GBX-1-1T	TRANSMISION COMPLETA	TRANSMISSION ASSY	1
2	172GBX-1-2	EMBRAGUE	CLUTCH	1
3	172GBX-1-3	ENGRANAJE PEQUEÑO	SMALL GEAR	1
4	172GBX-1-4	PIÑON GRANDE	BIG PINION	1
5	172GBX-1-5	ARANDELA	WASHER	1
6	172GBX-1-6	COJINETE 6002	BEARING 6002	1
7	172GBX-1-7	EJE EMBRAGUE	CLUTCH SHAFT	1
8	172GBX-1-8	CAMPANA EMBRAGUE	CLUTCH COVER	1
10	172GBX-1-10	RETEN 14X2.5	SEAL 14X2.5	1
11	172GBX-1-11	PIÑON 30X2	PINION 30X2	1
12	172GBX-1-12	POLEA DENTADA 24X3	PULLEY 24X3	1
13	172GBX-1-13	TORNILLO EJE 9X3	SHAFT SCREW 9X3	1
14	172GBX-1-14	COJINETE 30203	BEARING 30203	2
15	172GBX-1-15	COJINETE 32203	BEARING 32203	1
16	172GBX-1-16	JUNTA	GASKET	1
17	172GBX-1-17	ARANDELA 16	WASHER 16	1
18	172GBX-1-18	JUNTA M16	GASKET M16	1
19	172GBX-1-19	COJINETE 6203	BEARING 6203	4
20	172GBX-1-20	EJE	SHAFT	1
21	172GBX-1-21	CASQUILLO 202530	BEARING 202530	1
22	172GBX-1-22	CADENA TRACCION	TRACTION CHAIN	1
23	172GBX-1-23	CASQUILLO 141825	SLEEVE 141825	2
24	172GBX-1-24	PALANCA	LEVER	1
25	172GBX-1-25	EJE PALANCA	LEVER SHAFT	1
26	172GBX-1-26	EJE TRANSMISION	TRANSMISSION SHAFT	1
27	172GBX-1-27	RODAMIENTO 6205/P6C	BEARING 6205	2
28	172GBX-1-28	SOPORTE	SUPPORT	1
29	172GBX-1-29	EJE ENGRANAJE	GEAR SHAFT	1
30	172GBX-1-30	ENGRANAJE	GEAR 37X2.5	1
31	172GBX-1-31	ANILLO 40x35x7	O-RING 40x35x7	1
32	172GBX-1-32	RETEN 47X25X7	SEAL 47X25X7	2
33	172GBX-1-33	RETEN 52X25X7	SEAL 52X25X7	2
34	172GBX-1-34	FRENILLO 40	RING CLIP 40	2
35	172GBX-1-35	FRENILLO 50	RING CLIP 50	1
36	172GBX-1-36	PLACA SOPORTE	SHAFT SUPPORT COVER	2
37	172GBX-1-37	TORNILLO M8X16	SCREW M8X16	6
38	172GBX-1-38	TAPA RODAMIENTO 35X7	BEARING COVER 35X5	2
39	172GBX-1-39	JUNTA 40X5	GASKET 40X5	3
41	172GBX-1-41	TORNILLO M6X16	SCREW M6X16	3
42	172GBX-1-42	TAPON VISOR	VISOR CAP	1
43	172GBX-1-43	TAPON ACEITE	PLUG OIL	1
44	172GBX-1-44	TORNILLO M10X40	SCREW M10X40	1
45	172GBX-1-45	TORNILLO M10	SCREW M10	1
46	172GBX-1-46	CASQUILLO 16X2	SLEEVE 16X2	1
47	172GBX-1-47	CASQUILLO EJE 202419	SHAFT SLEEVE 202419	1
51	172GBX-1-51	TORNILLO CUADRADO	SQUARE SCREW	1
52	172GBX-1-52	PASADOR 6X25	PIN 6X25	1
53	172GBX-1-53	CLIP 6X8	CLIP 6X8	1

FIG 1

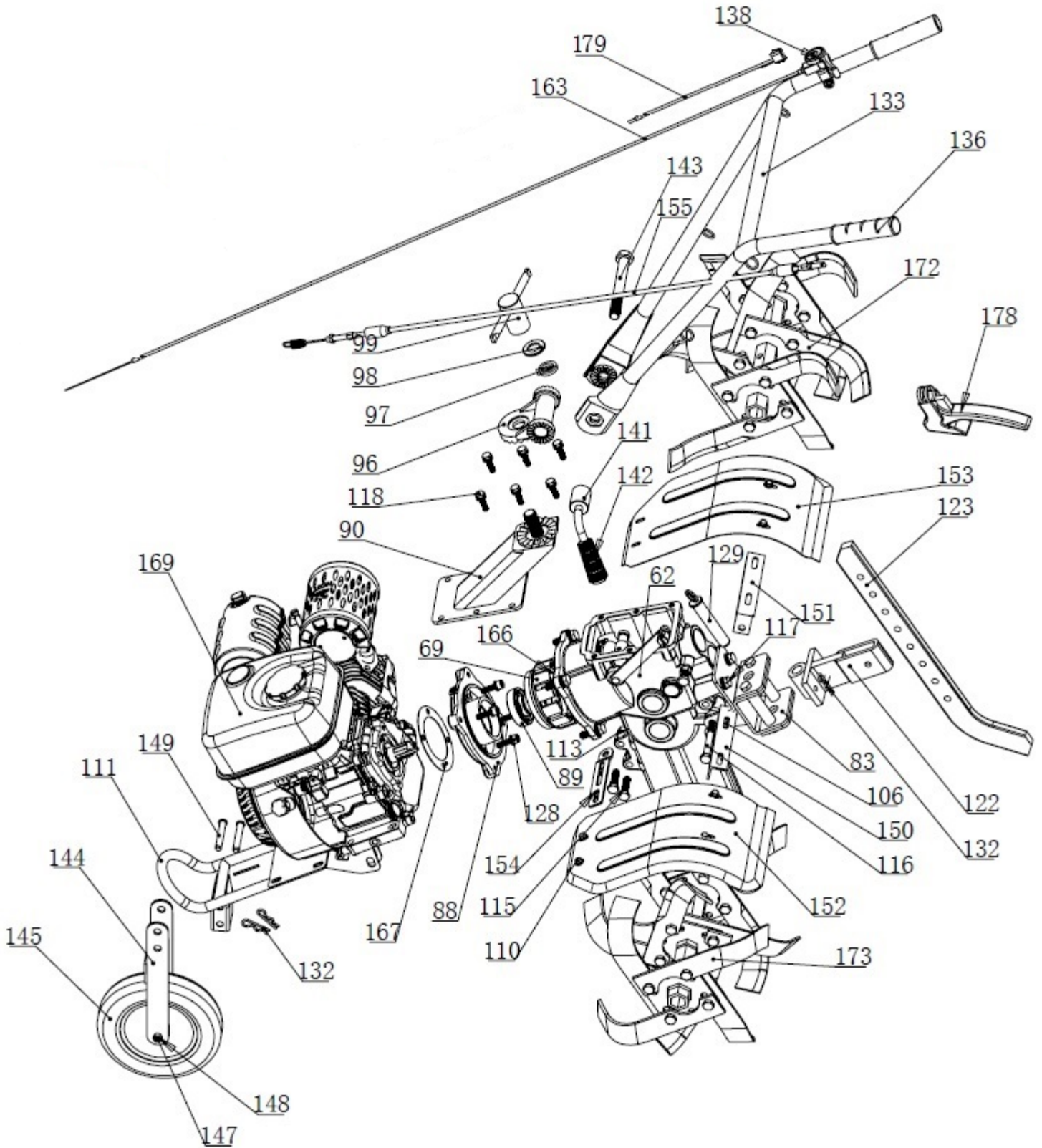


FIG. 1 BULL 861 QG V20				
Nº	Nº Ref.	Descripción	English name	Uds.
62	172GBX-1-62	CARCASA SUPERIOR	UPPER CASING	1
69	172GBX-1-69	ROTOR	ROTOR	1
83	172GBX-1-83	SOPORTE VISAGRA	SUPPORT	1
88	172GBX-1-88	SOPORTE ROTOR	ROTOR SUPPORT	1
89	172GBX-1-89	RODAMIENTO	BEARING BALL	2
90	172GBX-1-90	BRAZO SOPORTE MANILLAR	ARMREST SEAT	1
96	172GBX-1-96	PLACA MANILLAR	SKIEF TEETH	1
97	172GBX-1-97	JUNTA 20	GASKET 20	1
98	172GBX-1-98	ARANDELA 20	WASHER 20	1
99	172GBX-1-99	AJUSTE MANILLAR	HANDLE ADJUSTER COSRP	1
110	172GBX-1-110	TORNILLO M6X16	SCREW M6X16	11
111	172GBX-1-111	PARAGOLPES DELANTERO	BAMPER ASSY	1
113	172GBX-1-113	ARANDELA 10	WASHER 10	9
115	172GBX-1-115	TORNILLO M10X40	SCREW M10X40	3
116	172GBX-1-116	TORNILLO M10X85	SCREW M10X85	1
117	172GBX-1-117	TORNILLO M10X35	SCREW M10X35	6
118	172GBX-1-118	TORNILLO M8X30	SCREW M8X30	6
122	172GBX-1-122	VISAGRA ARTICULADA	DEPTH SPUR SUPPORT	1
123	172GBX-1-123	ESPOLON	DEPTH SPUR	1
128	172GBX-1-128	TORNILLO M8X30	SCREW M8X30	6
129	172GBX-1-129	TUBO SOPORTE 18	SUPPORT TUBE 18	1
132	172GBX-1-132	PASADOR TIPO R	PIN R	3
133	172GBX-1-133	MANILLAR	HANDLE BAR	1
136	172GBX-1-136	POMO	KNOB	2
138	172GBX-1-138	MANDO ACELERDOR	THROTTLE CONTROL	2
141	172GBX-1-141	PALANCA CAMBIOS	SHIFT LEVER	1
142	172GBX-1-142	POMO PALANCA CAMBIOS	SHIFT LEVER KNOB	1
143	172GBX-1-143	TORNILLO PASADOR M16X140	SCREW PIN M16X140	1
144	172GBX-1-144	SOPORTE RUEDA	WHEEL SUPPORT	1
145	172GBX-1-145	RUEDA	WHEEL	1
147	172GBX-1-147	TORNILLO RUEDA M8X65	WHEEL SCREW M8X65	1
148	172GBX-1-148	ARANDELA RUEDEA M8	WHEEL WASHER M8	1
149	172GBX-1-149	PASADOR 10X65	PIN 10X65	2
150	172GBX-1-150	CHAPA FIJACION DERECHA	RIGHT FIXER PLATE	1
151	172GBX-1-151	CHAPA FIJACION IZQUIERDA	LEFT FIXER PLATE	1
152	172GBX-1-152	GUARDABARROS IZQUIERDO	LEFT SIDE FENDER	1
153	172GBX-1-153	GUARDABARROS DERECHO	RIGHT SIDE FENDER	1
154	172GBX-1-154	CHAPA FIJACION INFERIOR	LOWER FIXER PLATE	2
155	172GBX-1-155	CABLE EMBRAGUE	CLUTCH LINE	1
163	172GBX-1-163	CABLE ACELRADOR	THROTTLE LINE	1
166	172GBX-1-166	CARCASA INFERIOR	LOWER CASING	1
167	172GBX-1-167	PLACA SOPORTE	SUPPORT PLATE	1
169	172GBX-1-169	MOTOR	ENGINE	1
172	172GBX-1-172	JUEGO FRESA DCHA	RIGHT BLADE ASSY	1
173	172GBX-1-173	JUEGO FRESA IZQ	LEFT BLADE ASSY	1
178	172GBX-1-178	PALANCA EMBRAGUE	CLUTCH SHAFT	1
179	172GBX-1-179	INTERRUPTOR ON-OFF	ON-OFF SWITCH	1

FIG. 2 MOTOR

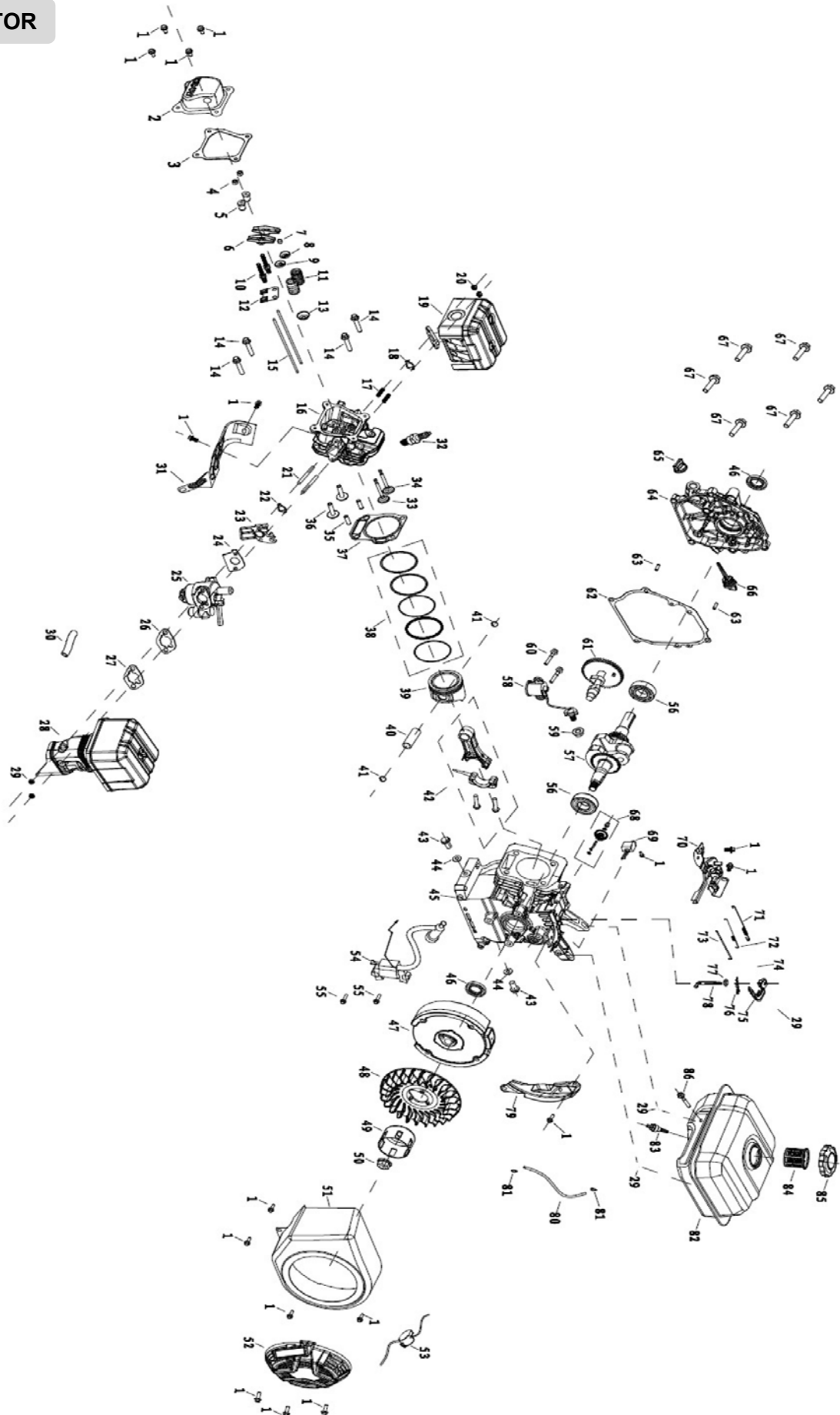


FIG. 2 BULL 861 QG V20

Nº	Nº Ref.	Descripción	English name	Uds.
1	GB5789.060120170	TORNILLO M6X12	BOLT M6X12	17
2	106.2.2800.00.01	TAPA CILINDRO	CYLINDER HEAD COVER	1
3	106.2.0083.00.01-3	JUNTA TAPA CILINDRO	GASKET, VALVE COVER	1
4	106.1.2503.00.01	TUERCA	LOCK NUT	2
5	106.1.2504.00.01	CASQUILLO	ADJUST NUT	2
6	106.1.2501.00.01	BALANCIN	ROCKER ARM	2
7	106.1.0014.00.01	TAPA AJUSTE	ADJUST CAP, EXHAUST	1
8	106.1.0011.00.01	BASE MUELLE	VALVE SPRING SEAT	1
9	106.1.0010.00.01	BASE MUELLE	VALVE SPRING SEAT	1
10	106.1.2502.00.01	TORNILLO REGLAJE	ROCKER ARM STUD	2
11	106.1.0013.00.01	MUELLE VALVULA	VALVE SPRING	2
12	106.1.2400.00.01	GUIA SOPORTE	ROCKER ARM BASE	1
13	106.1.2300.00.01	RETEN VALVULA	INTAKE VALVE SEAL	1
14	GB5789.080600270	TORNILLO M8X60	BOLT MX860	4
15	106.2.0083.00.01	VARILLA EMPUJE	PUSH ROD	2
16	106.1.2100.00.01	CILINDRO	CYLINDER HEAD	1
17	GB898.080340270	TORNILLO ESCAPE M8X34	STUD M8X34	2
18	106.2.0038.00.01	JUNTA ESPACE	GASKET, EXHAUST PIPE	1
19	106.2.3500.40.38	ESCAPE	MUFFLER	1
20	GB6170.080000270	TUERCA M8	NUT M8	2
21	GB898.061130170	TORNILLO CILINDRO M6X110	STUD M6X110	2
22	106.2.0033.00.01	JUNTA ADMISION	GASKET, CARBURETOR INSULATOR	1
23	106.2.0034.00.02	CUELLO ADMISION	CARBURETOR INSULATOR	1
24	106.2.0032.00.01	JUNTA CARBURADOR	CARBURETOR GASKET	1
25	106.2.3300.00.02	CARBURADOR	CARBURETOR	1
26	106.2.0036.00.05	JUNTA	GASKET	1
27	106.2.0036.00.04	JUNTA FILTRO AIRE	GASKET, THICKENED	1
28	106.2.3400.00.29	FILTRO AIRE	AIR FILTER	1
29	GB6177.060000170	TORNILLO M6	BOLT M6	5
30	302.2.0037.00.01	MANGUITO COLECTOR	MANIFOLD	1
31	106.2.0091.00.01	CUBIERTA	SHROUD	1
32	106.1.2200.00.01	BUJIA	SPARK PLUG	1
33	106.1.0009.00.01	VALVULA IN	INTAKE VALVE	1
34	106.1.0008.00.01	VALVULA EX	EXHAUST VALVE	1
35	106.2.0018.00.01	PASADOR 10X16	DOWEL PIN Φ 10x16	2
36	106.2.0015.00.01	TAQUET	TAPPET	2
37	107.2.0019.00.02	JUNTA CILINDRO	GASKET, CYLINDER HEAD	1
38	107.1.2000.00.01	KIT SEGMENTOS	PISTON RING SET	1
39	107.1.0005.00.01	PISTON	PISTON	1
40	106.1.0006.00.01	PASADOR BULON	PISTON PIN	1
41	106.1.0007.00.01	FRENILLO	CIRCLIP, PISTON PIN	2
42	107.1.1502.00.01	BIELA	CONNECTING ROD	1
43	GB5789.100150370	TORNILLO DRENAJE M10X15	DRAIN BOLT M10X15	2

FIG. 2 BULL 861 QG V20

Nº	Nº Ref.	Descripción	English name	Uds.
44	FB0003.100202070	ARANDELA 10	WASHER 10	2
45	107.1.1100.00.02	CARTER	CRANKCASE	1
46	106.1.1800.00.01	RETEN	RING	2
47	106.2.2900.00.03	VOLANTE MAGNETICO	FLYWHEEL	1
48	106.2.0023.00.02	VENTILADOR	COOLING FAN	1
49	306.2.0024.00.01	TAZA ARRANQUE	STARTER CUP	1
50	GB6177.140000570	TUERCA M14	NUT M14	1
51	106.2.3101.10.01	CUBIERTA VENTILADOR	BLOWER HOUSING	1
52	106.2.3112.10.02	ARRANCADOR	RECOIL STARTER	1
53	106.2.3113.41.01	INTERRUPTOR	ENGINE SWITCH	1
54	106.2.3000.00.02	ELECTRONICO	IGNITION MODULE	1
55	GB5787.060250170	TORNILLO M6X25	BOLT M6X25	2
56	106.1.1900.00.01	COJINETE 6205	BEARING 6205	2
57	106.2.2700.00.09	CIGÜEÑAL	CRANKSHAFT	1
58	106.1.1200.00.01	SENSOR ACEITE	OIL SENSOR	1
59	GB6177.100000370	TUERCA SENSOR	OIL SENSOR NUT	1
60	GB5789.060140170	TORNILLO M6X14	BOLT M6X14	2
61	106.2.2600.00.03	ARBOL LEVAS	CAMSHAFT	1
62	106.2.0017.00.04	JUNTA CARTER	GASKET, CRANKCASE COVER	1
63	107.2.0018.00.02	PASADOR 8X14	DOWEL PIN 8X14	2
64	106.1.0004.00.14	TAPA CARTER	CRANKCASE COVER	1
65	106.1.1600.20.02	TAPON ACEITE	OIL PLUG	1
66	106.1.1700.20.03	TAPON NIVEL ACEITE	DIPSTICK	1
67	GB5787.080320270	TORNILLO M8X32	BOLT M8X32	6
68	106.1.1300.00.01	PIÑON GOBERNADOR	GOVERNOR GEAR	1
69	106.2.0026.00.01	INTERRUPTOR SENSOR ACEITE	OIL SENSOR	1
70	106.2.3200.00.01	FRENO PIÑON GOBERNADOR	GOVERNOR GEAR BRACKET ASSY	1
71	106.2.0030.00.01	MUELLE GOBERNADOR	GOVERNOR SPRING	1
72	106.2.0029.00.01	VARILLA MUELLE	IDLE SPRING	1
73	106.2.0031.00.01	VARILLA ACELERADOR	THROTTLE LINKAGE	1
75	106.2.0028.00.01	PALANCA GOBERNADOR	GOVERNOR LEVER	1
76	106.2.0054.00.01	PASADOR	COTTER PIN	1
77	FB0003.060130570	JUNTA	GASKET	1
78	106.1.0002.00.01	EJE GOBERNADOR	GOVERNOR GEAR SHAFT	1
79	106.2.0079.40.01	SOPORTE INFERIOR	LOWER SHIELD	1
80	106.2.0050.00.16	TUBO GASOLINA	FUEL HOSE	1
81	106.2.0035.00.04	FRENILLO TUBO GASOLINA	CLAMP, FUEL HOSE	2
82	106.2.3600.10.17	DEPOSITO GASOLINA	FUEL TANK	1
83	106.2.3610.00.01	TAPON SALIDA	FUEL TANK FILLER NECK	1
84	106.2.3603.00.01	FILTRO GASOLINA	STRAINER	1
85	106.2.3605.00.02	TAPON GASOLINA	FUEL CAP	1
86	GB5787.060280170	TORNILLO M6X28	BOLT M6X28	1